

CE

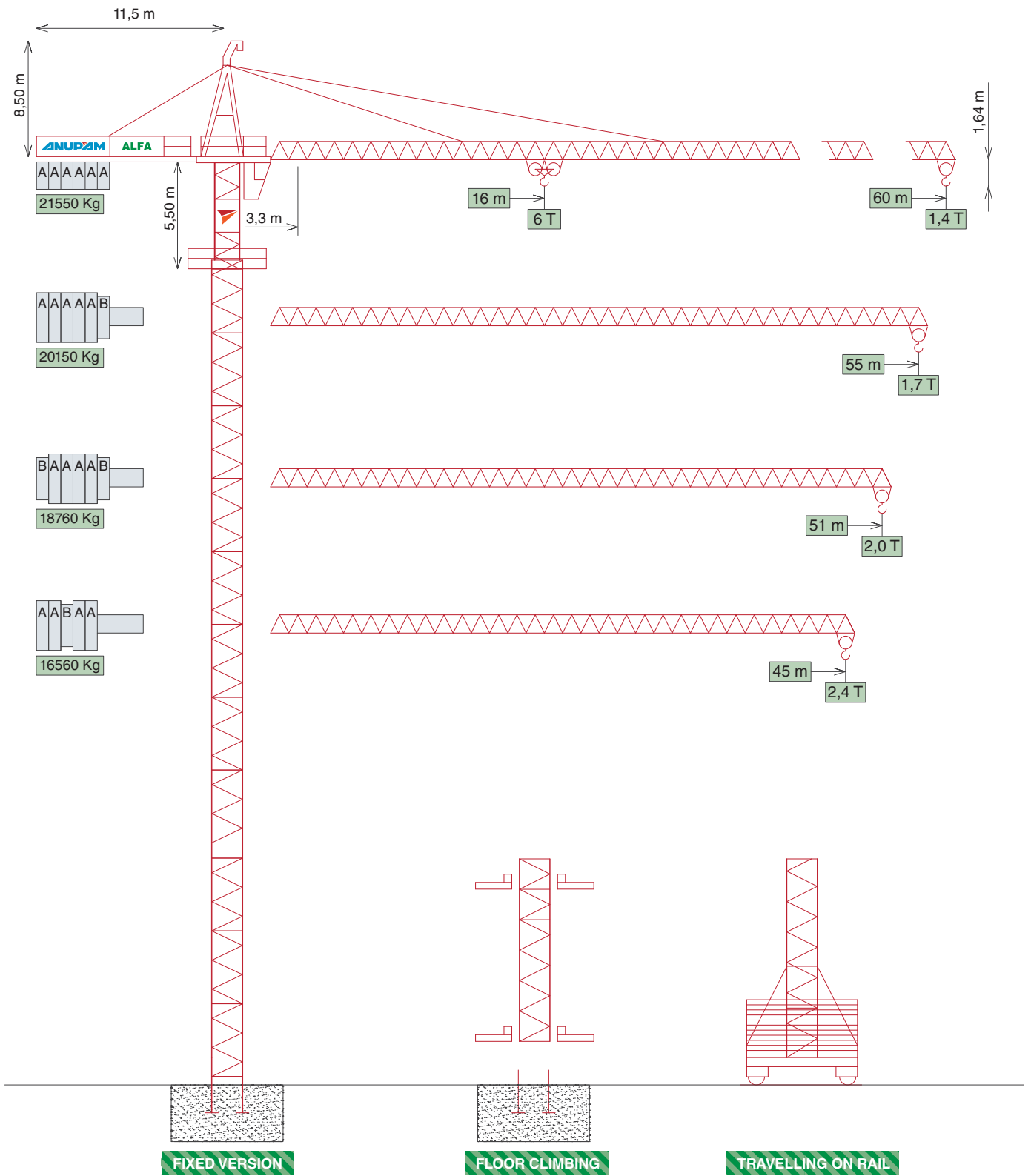
Model A-806

European Product
@ Indian Price

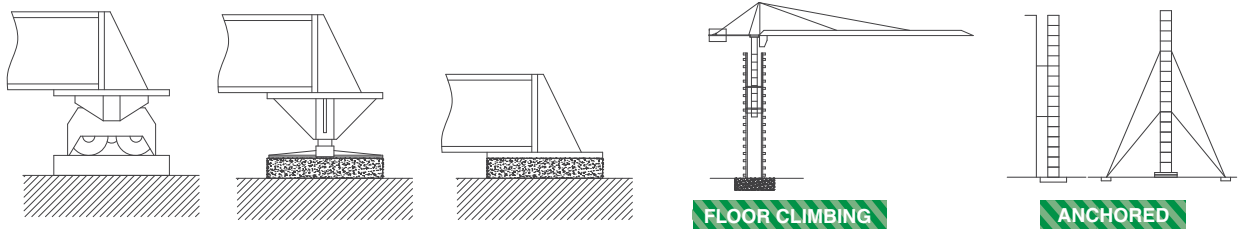


CE

ANUPAM-ALFA

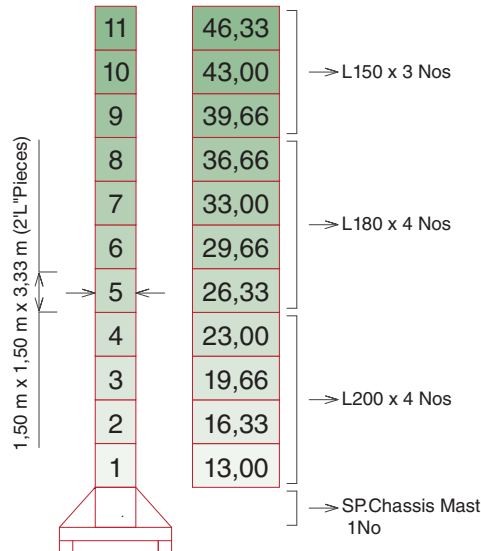


CRANE CONFIGURATION

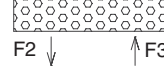
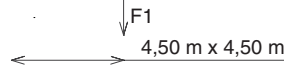
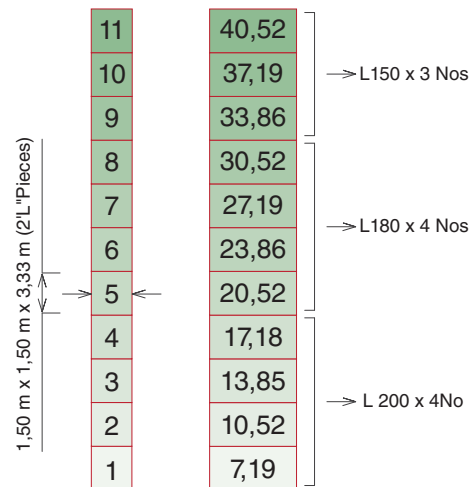


TOWER SECTIONS

TRAVELLING



FIXED IN FOUNDATION



● In Service

■ Out of Service

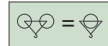
F1 ● T 75 ■ T 89

~ T 46

F2 ● T 102 ■ T 123

F3 ● T 80 ■ T 100 ~ T 43

LOAD DIAGRAMS

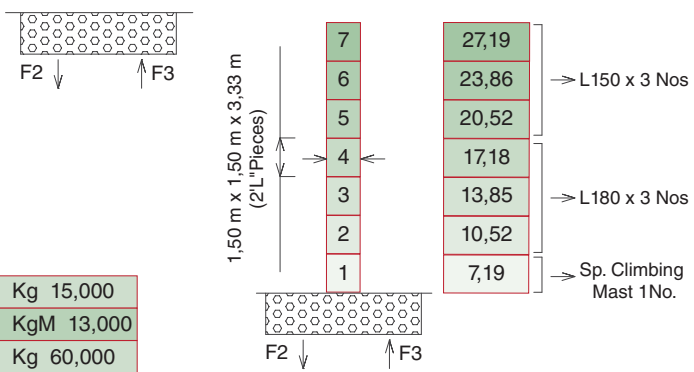
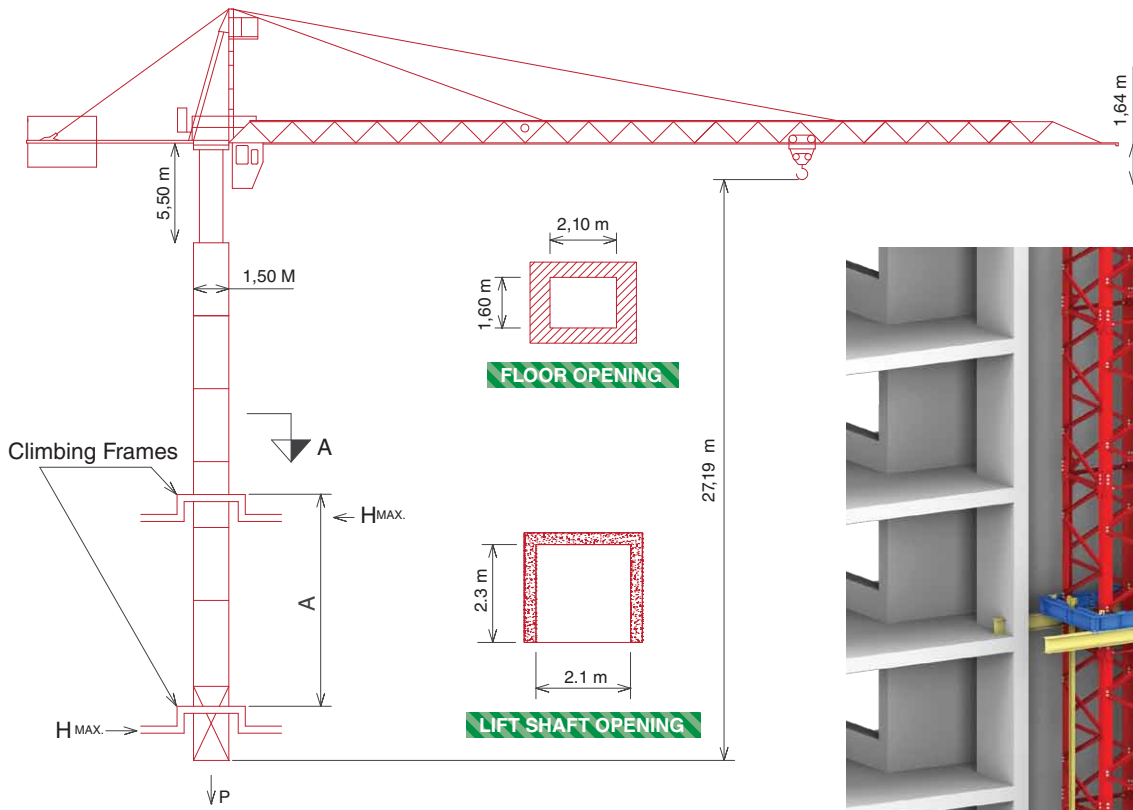


	3	2,3	2	1,8	1,4				60 m
	16	20	25	31	40	45	50	60	
	6	4,8	3,8	3	2,3	2	1,8	1,4	55 m
	17,5	20	25	33	45	50	55		
	3	2,4	2,3	2					51 m
	18,5	25	35	42	45	51			
	3,1	2,5	2,4					45 m	
	18,5	25	35	42	45				
	6	4,4	3,1	2,5	2,4				

MECHANISMS

VFD	Hoist												HP	
			M/min	3	10	30	50	70	1,5	5	15	25	35	25
			3	3	3	1,5	1,2	6	6	6	3	2,4		
VFD	Trolley		M/min										0 - 60	4
VFD	Slewing		RPM										0 - 0.8	2 x 5
	Travelling		M/min										0 - 25	2 x 6,5
Power Supply - 430V (+ 6% - 10%) 50 Hz														
Main Supply - KVA - 48 (Fixed Version KVA - 36)														

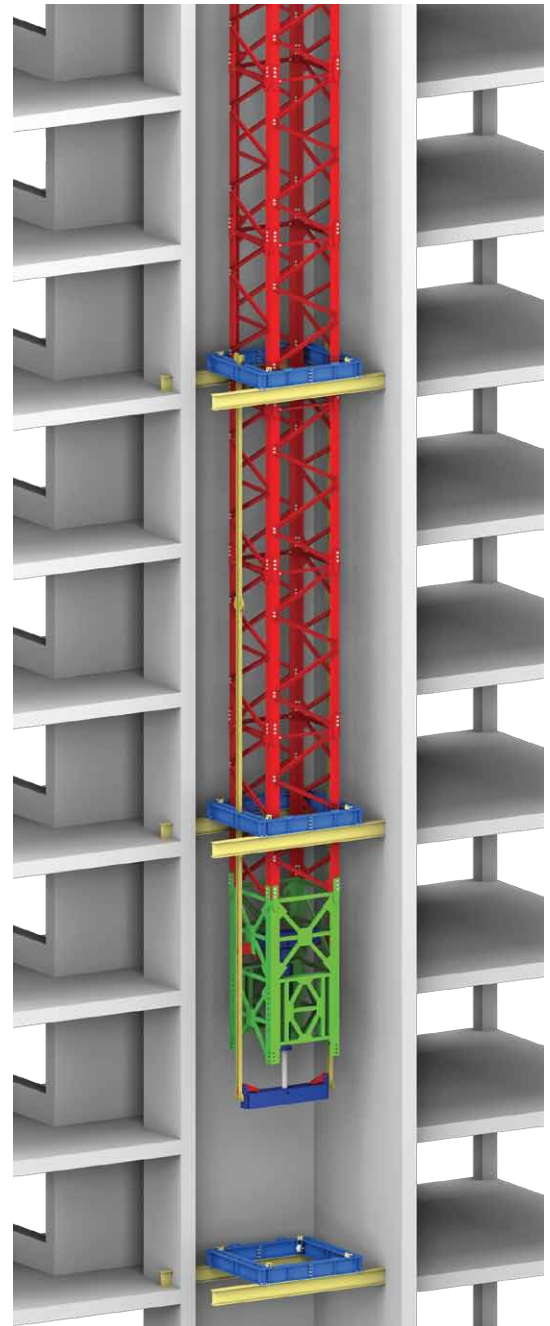
FLOOR CLIMBING CRANE



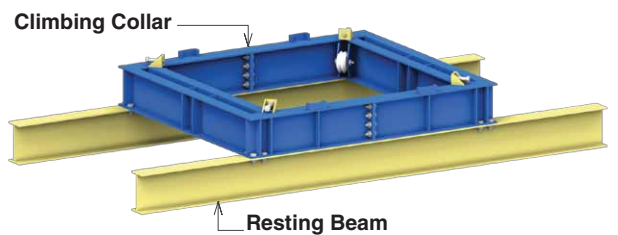
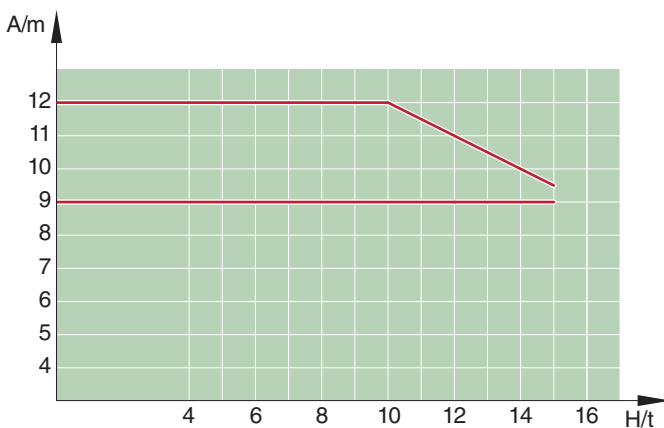
H _{MAX.} = Kg	15,000
MD = KgM	13,000
P = Kg	60,000

H_{MAX.} = Horizontal Load
 MD = Torque
 P = Crane Weight

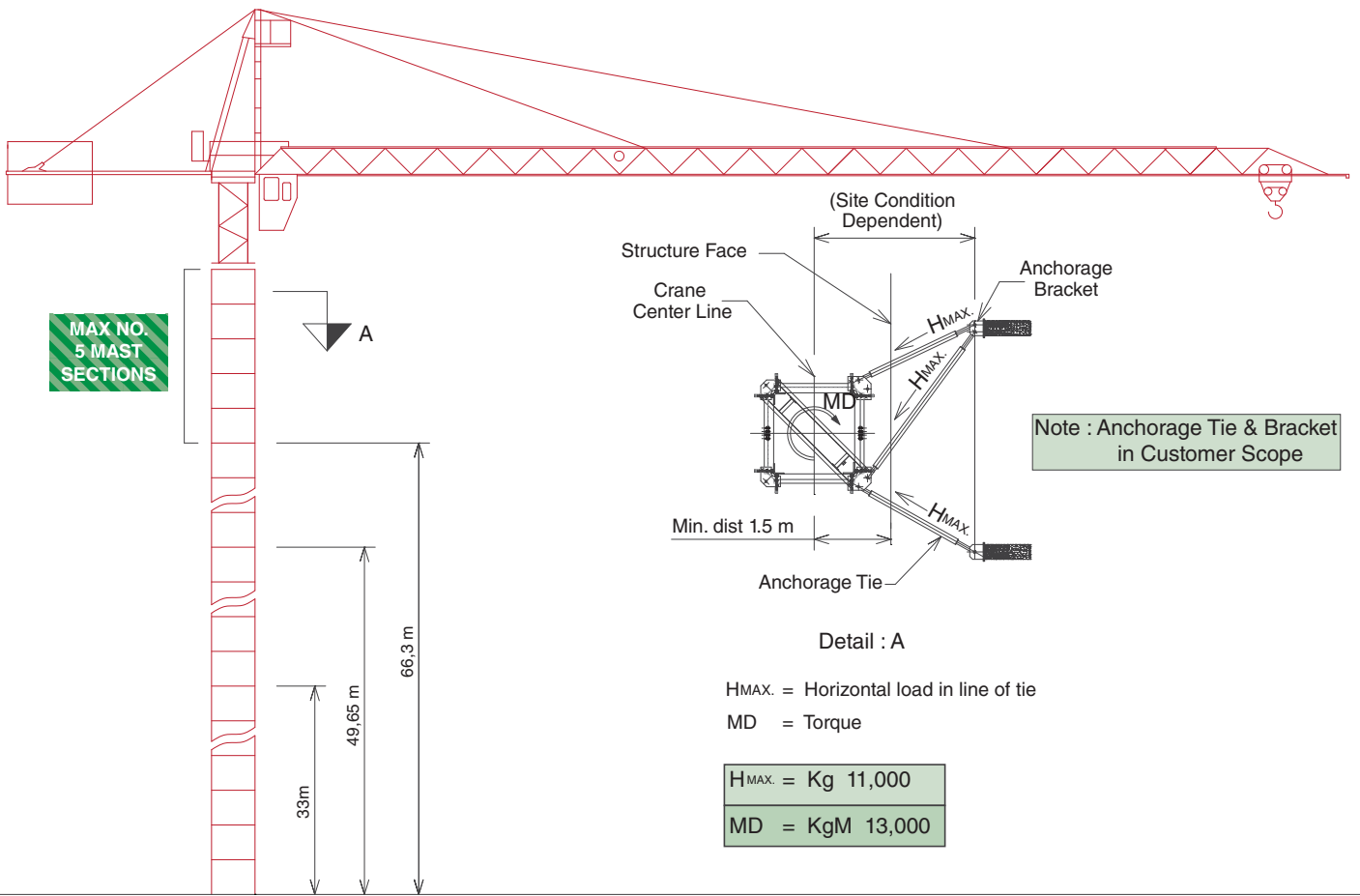
F2	● T 70	■ T 85	● In Service
F3	● T 55	■ T 70	■ Out of Service



LOAD GRAPH

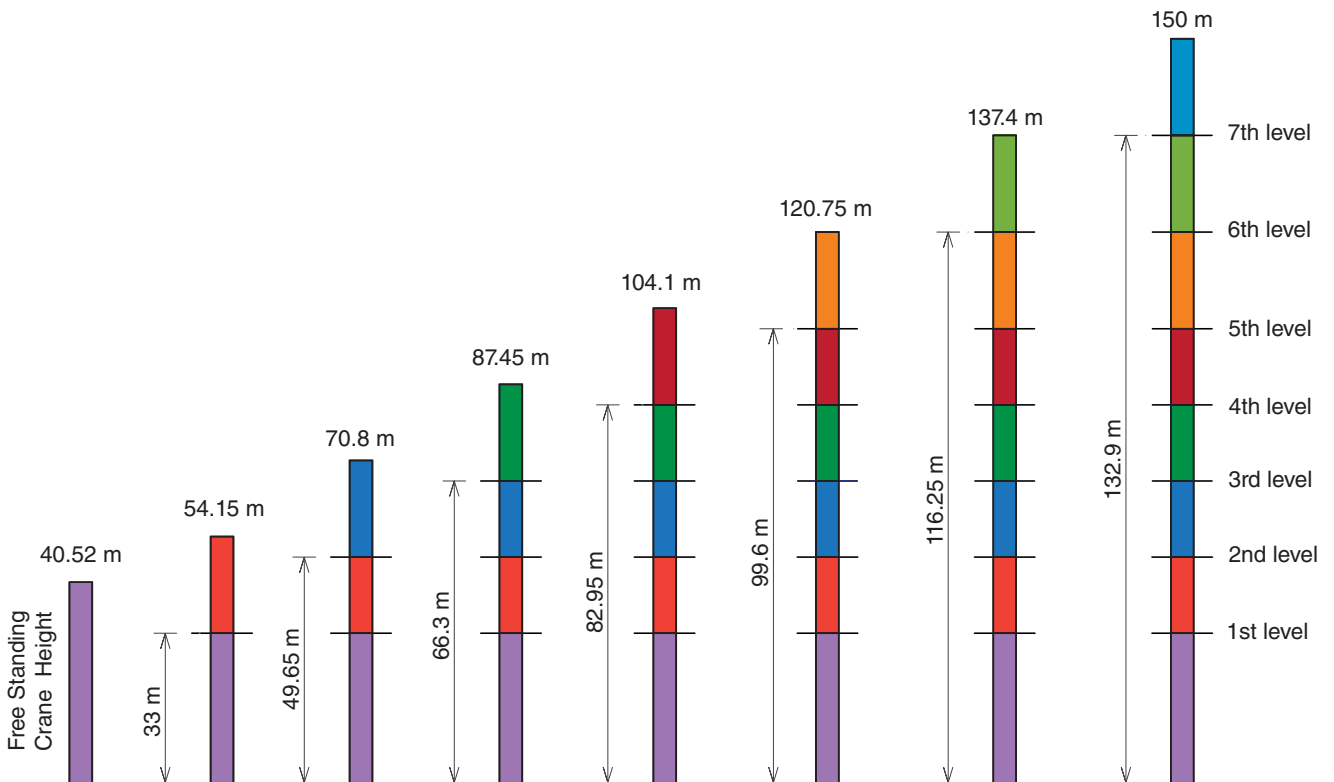


ANCHORED CRANE



Anchored Level - Example.

ANCHORAGE LEVELS



Description		Dimensions L X W X H	Weight kg
Foundation Mast		1660 x 1720 x 1770 mm	650
Mast L Frame		3690 x 1400 x 1400 mm	L150 - 1000 L180 - 1100 L200 - 1200
Telescopic Mast		7200 x 1200 x 1200 mm	2200
Slewing Assembly		4710 x 1450 x 1240 mm	3500
Vertical Part of Cathead		7695 x 1360 x 450 mm	900
Inclined Part of Cathead		6980 x 1360 x 400 mm	540
Counter Jib		9440 x 1250 x 500 mm	900
Counter Weight Block A		3420 x 950 x 480 mm	3590
Counter Weight Block B		2090 x 950 x 480 mm	2200
Trolley		1480 x 1380 x 500 mm	270
Trolley Winch		100 x 500 x 950 mm	270
Hoist Winch		2200 x 760 mm	800
Main Jib-1		5780 x 1110 x 920 mm	620
Main Jib-2		4360 x 1110 x 920 mm	445
Main Jib-3		4360 x 1110 x 920 mm	455
Main Jib-4		5780 x 1110 x 920 mm	555
Main Jib-5		5780 x 1110 x 920 mm	510
Main Jib-6		5780 x 1110 x 920 mm	470
Main Jib-7		5780 x 1110 x 920 mm	510
Main Jib-8		5780 x 1110 x 920 mm	550
Main Jib-9		4360 x 1110 x 920 mm	355
Main Jib-10		4360 x 1110 x 920 mm	350
Main Jib-11		6925 x 1110 x 920 mm	450
Jib Assembly R 60 m	① ② ③ ④ ⑤ ⑥ ⑦ ⑧ ⑨ ⑩ ⑪		6950
Jib Assembly R 55 m	① ② ③ ④ ⑤ ⑥ ⑦ ⑧ ⑨ ⑩		6635
Jib Assembly R 51 m	① ② ③ ④ ⑤ ⑥ ⑦ ⑧ ⑩		6285
Jib Assembly R 45 m	① ② ③ ④ ⑤ ⑥ ⑦ ⑩		5740



Head Office : ANUPAM INDUSTRIES LIMITED
 138, G.I.D.C, V.U.Nagar - 388 121, Anand, Gujarat. INDIA
Tel.: +91 2692 236118, 235210 | **Fax:** +91 2692 236324
Email: towercrane@anupamgroup.com | anupam@anupamgroup.com
Works : Unit No-4, Nadiad-Dakor Road, Salun, Nadiad - 387360, Gujarat. INDIA
Branch Offices : New Delhi, Mumbai, Chennai, Kolkata, Hyderabad